



# Oclyte Tuff Coat™

Oclyte Tuff Coat™ is a high-performance, two-component spray coating that is field proven world wide for extending the service life of utility poles beyond the life expectancy of conventional galvanising.

It is specifically engineered to add corrosion, abrasion and impact resistance to galvanised steel structures such as: utility poles, multiplate structures and guardrail components – especially at and below ground level.

## Features

- » **Direct to metal application** – no primer required with application to mechanically prepared (profile shaping) galvanised or steel substrates
- » **Green technology** – 100% solids technology, contains no VOCs (Volatile Organic Compounds – e.g. paint solvent), styrene or coal tar
- » **Single coat** – is applied in a single coat with a multi-pass application to create the required film builds and is five times thicker than the currently used paint system
- » **Superior scratch and impact resistant** – due to an extremely durable polymer membrane, damage is highly unlikely during handling and/or installation
- » **Chemical resistance** – provides exceptional chemical resistance to a wide range of aggressive soils, salts and other chemicals
- » **Fast cure** – 10 minutes to handle
- » CSP Pacific offers a **20 year system warranty**

## Performance testing

This product has been thoroughly performance tested for:

- » Toughness
- » Impact
- » Scratch resistance
- » Chemical resistance
- » Corrosion resistance
- » Adhesion
- » Cathodic disbondment
- » Salt spray resistance

In addition CSP Pacific has undertaken comparative 'accelerated corrosion testing' between the various coating systems available on the market and the currently used system

See test results over leaf, where corrosion was simulated over time



More information on **Oclyte Tuff Coat™** can be found at [www.csppacific.co.nz](http://www.csppacific.co.nz) or call **0800 655 200**

Leading road side and barrier systems supplier

### CSP PACIFIC

306 Neilson St, Onehunga,  
PO Box 12 949, Penrose,  
Auckland 1642, New Zealand  
[www.csppacific.co.nz](http://www.csppacific.co.nz)



Columns



Multiplate



Retaining



Hire



Barriers



Traffic Control



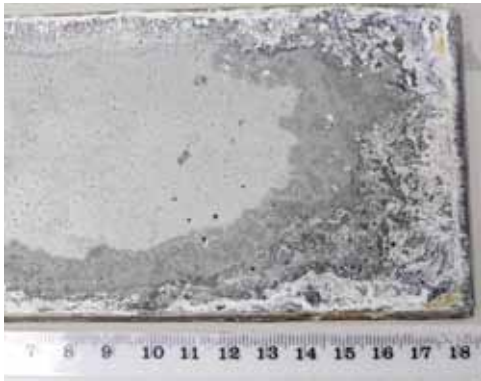
# Oclyte Tuff Coat™

## Comparative accelerated corrosion test results

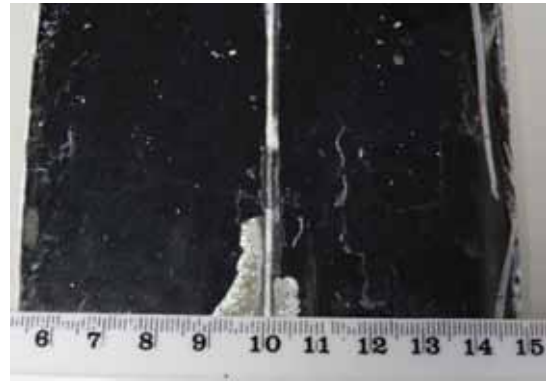
These tests simulated potential damage during installation and handling by scratching the coating on the test pieces down to bare metal. The coating was monitored over time at the scratched area and the undamaged area.

NB – A saw was required to cut through the **Oclyte Tuff Coat™** to expose the metal during testing.

### Hot Dip Galvanising after 500 hours of salt spray testing



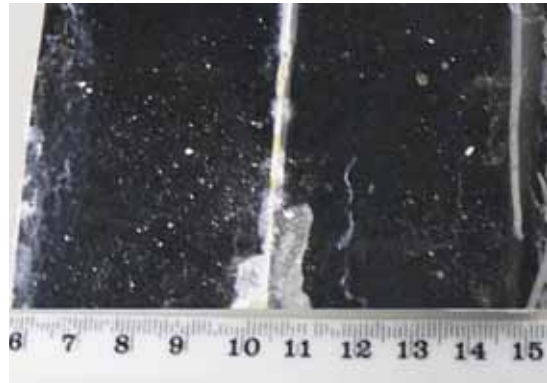
### Oclyte Tuff Coat™ after 500 hours of salt spray testing



### Hot Dip Galvanising after 1000 hours of salt spray testing



### Oclyte Tuff Coat™ after 1000 hours of salt spray testing



#### Result

- Galvanising has sacrificed itself to protect the steel
- After 1000 hours of salt spray testing almost all the galvanising was gone

#### Result

- Excellent adhesion to the surface
- 5-10mm loss of adhesion at the cut surface area only
- 4mm start of corrosion at the cut area
- Uncut surface is in excellent condition, no corrosion present

More information on **Oclyte Tuff Coat™** can be found at [www.csppacific.co.nz](http://www.csppacific.co.nz) or call **0800 655 200**

Leading road side and barrier systems supplier

#### CSP PACIFIC

306 Neilson St, Onehunga,  
PO Box 12 949, Penrose,  
Auckland 1642, New Zealand  
[www.csppacific.co.nz](http://www.csppacific.co.nz)



Columns



Multiplate



Retaining



Hire



Barriers



Traffic Control