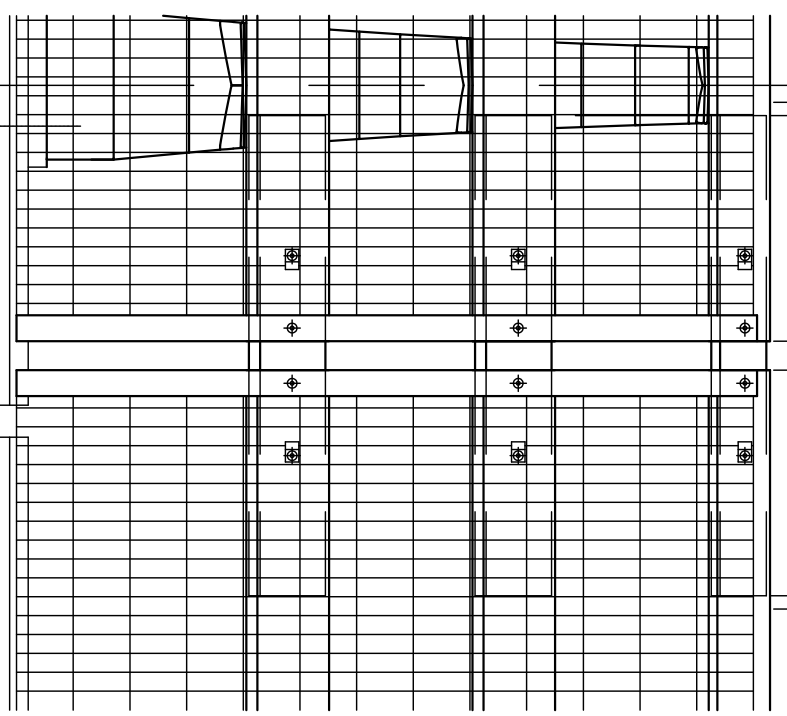
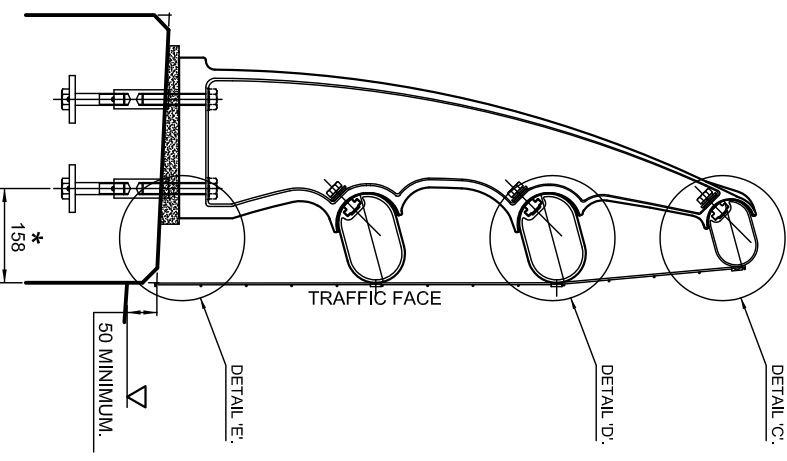


SPECIAL FIXING NOTE:
ANY MESH FIXING WITHIN THE 380mm LENGTH OF THE RAIL END TO BE FIXED WITH THE FOLLOWING:
• MESH CLIPS - M5x8mm LONG DOMED SOCKET HEAD STAINLESS STEEL SETSCREWS GRADE A2
• OPTIONAL TOP FLASHING - M5x12mm LONG DOMED SOCKET HEAD STAINLESS STEEL SETSCREWS GRADE A2
• VERTICAL END FLASHING - STAINLESS STEEL DOMED SOCKET HEAD SETSCREWS GRADE A2. M5x12mm LONG FOR TOP RAIL FIXING AND M5x16mm LONG FOR LOWER TWO MAIN RAIL FIXINGS.
AT ALL OTHER LOCATIONS THE APPROPRIATE DRIVE RIVETS ARE TO BE UTILISED.

MESH FIXING CLIP REQUIREMENTS.

SYSTEM	REQUIREMENTS	NOTES
VGAN 302.	11No. PER 1.830m PANEL. HALF CLIP MESHING SYSTEM.	TOP RAIL CLIPS ARE TO BE SPACED AT MAXIMUM LONGITUDINAL CENTRES OF 450mm. MIDDLE AND BOTTOM RAIL CLIPS TO BE SPACED AT MAXIMUM LONGITUDINAL CENTRES OF 915mm.
VGAN 302.	6No. PER 1.830m PANEL. OPTIONAL TOP FLASHING MESHING SYSTEM.	3.0m LONG TOP RAIL FLASHING STRIP TO HAVE FIXINGS SPACED AT MAXIMUM LONGITUDINAL CENTRES OF 203mm. MIDDLE AND BOTTOM RAIL CLIPS TO BE SPACED AT MAXIMUM LONGITUDINAL CENTRES OF 915mm.

VGAN 302.



MATERIAL SPECIFICATION.

ITEM	SPECIFICATION	ITEM	SPECIFICATION
TOP FLASHING AND MESH CLIPS.	ALL EXTRUSIONS ARE TO BE ALUMINIUM ALL OY EN AW6082 T6.	RIVETS.	ALL RIVETS TO BE ALUMINIUM MASTERFIX DRIVE RIVETS CODE: R1803-4816 OR R1803-4809 OR SIMILAR APPROVED.
WELDMESH PANELS.	STANDARD WELDMESH PANELS WITH 76.2 x 25.4 CENTRES x 3.0mm THICK WIRE TO ONE OF THE FOLLOWING SPECIFICATIONS: 1) CARBON STEEL WIRE HOT DIPPED GALVANISED TO BS EN ISO 1461 OR BY AN ALTERNATIVE METHOD SPECIFIED BY THE ENGINEER. 2) STAINLESS STEEL WIRE TO GRADE 304S31, 316S31 OR TO AN ALTERNATIVE SPECIFIED BY THE ENGINEER.	SET SCREWS.	M5x8mm, 12mm AND 16mm LONG DOMED SOCKET HEAD SET SCREWS TO BE STAINLESS STEEL GRADE A2 OR SIMILAR APPROVED.

SECTION SCHEDULE

NO.	SECTION	DESCRIPTION
1	TOP FLASHING SECTION 113790.	
2	MESH HALF CLIP SECTION 113786.	

W/O No.
DRAWING TO BE RETURNED TO DRAWING OFFICE ON COMPLETION OF WORK.

V&G
Varley and Gulliver Ltd.
Alfred Street, Sparkbrook,
Birmingham B12 8JK
Tel. 44 (0) 121 773 2441
Fax. 44 (0) 121 766 6875
Website: www.v-and-g.co.uk

DRAWING NUMBER
VGAN 300 (AP) - 04.