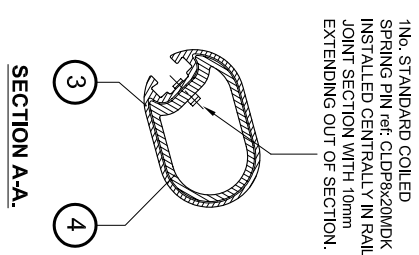
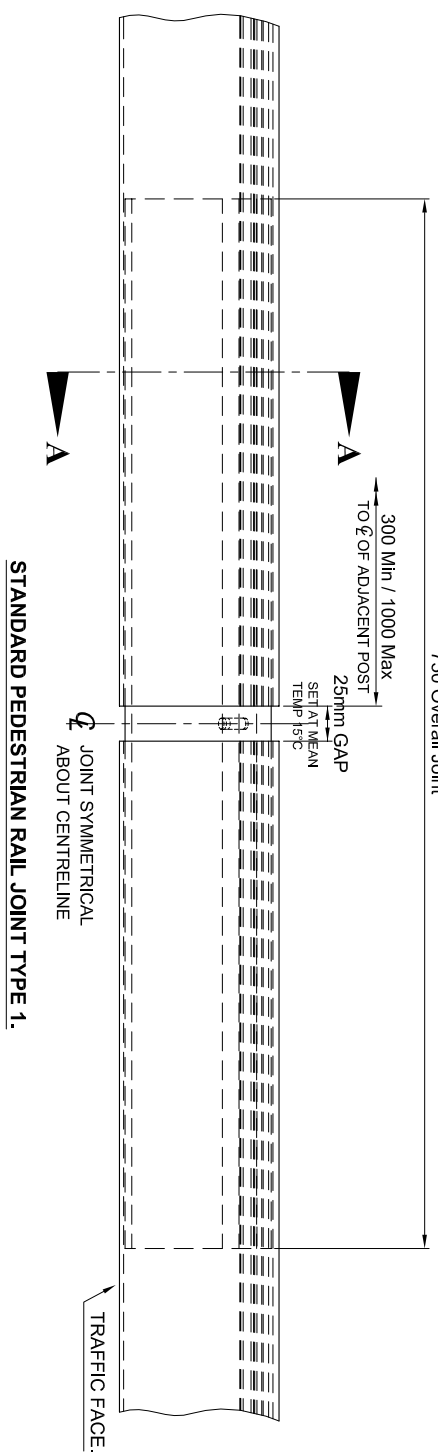
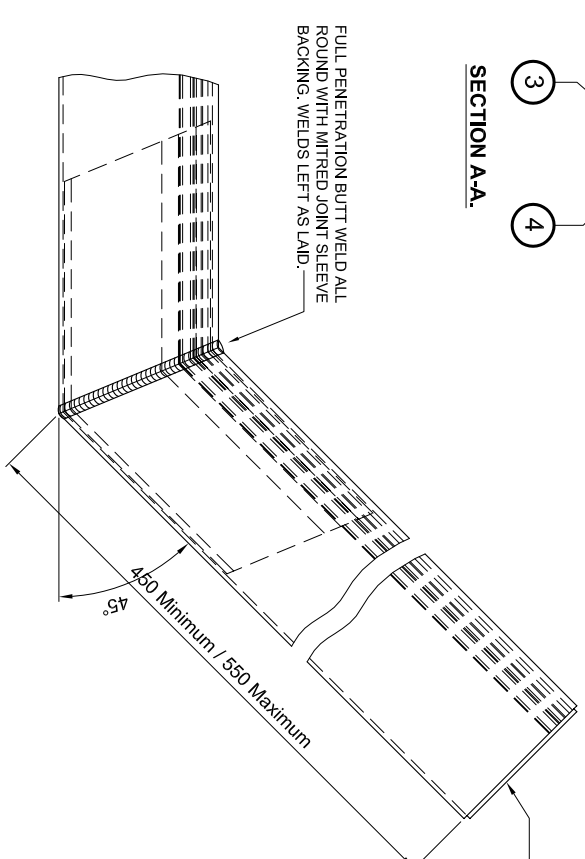
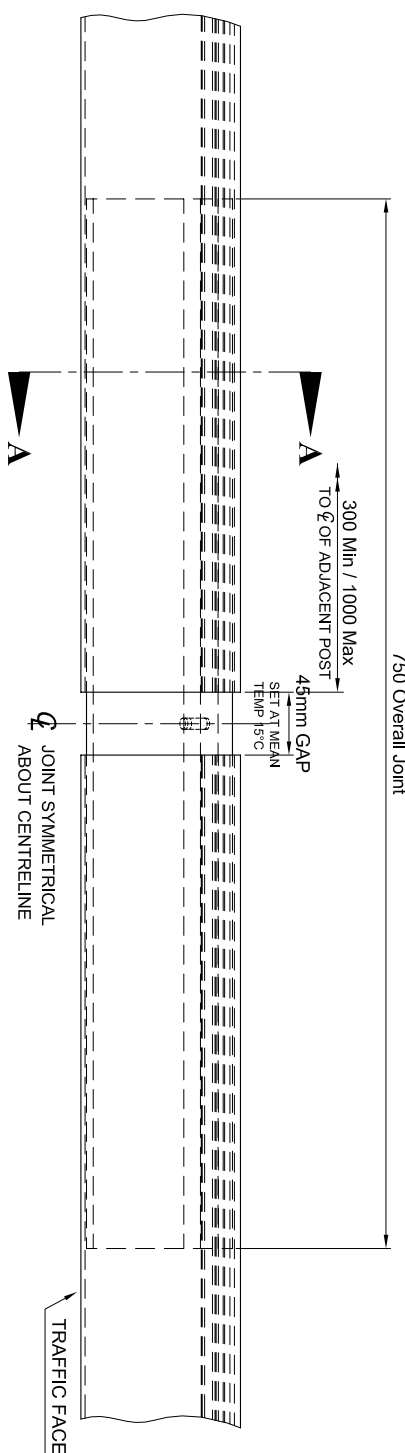


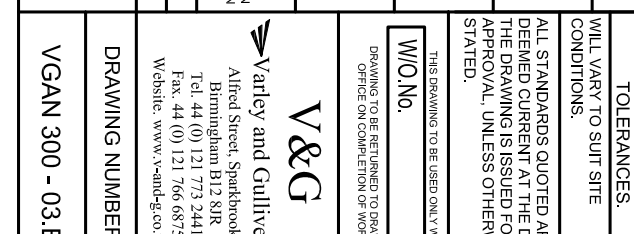
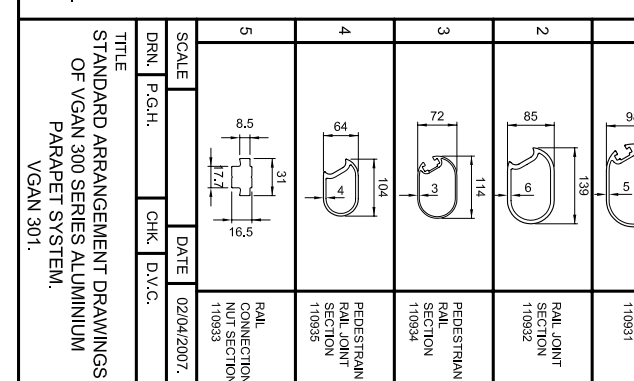
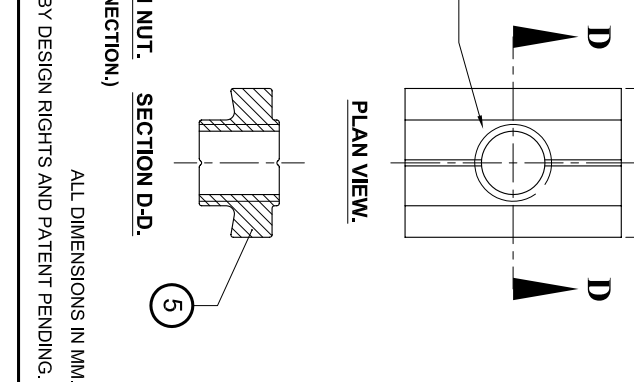
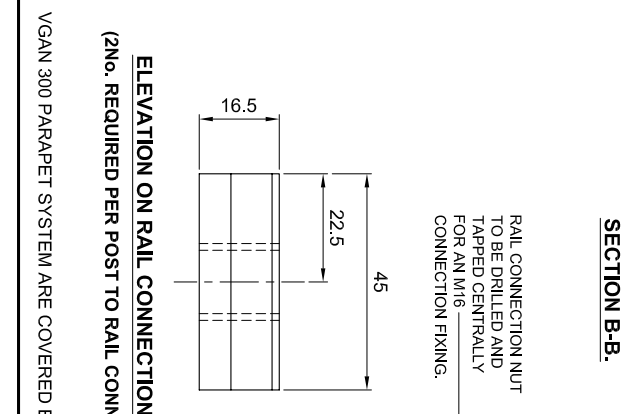
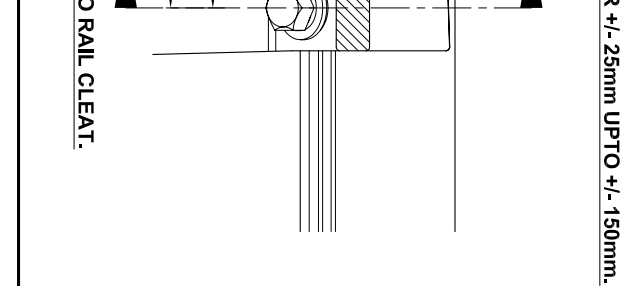
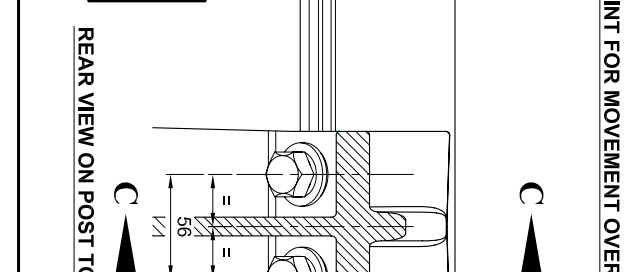
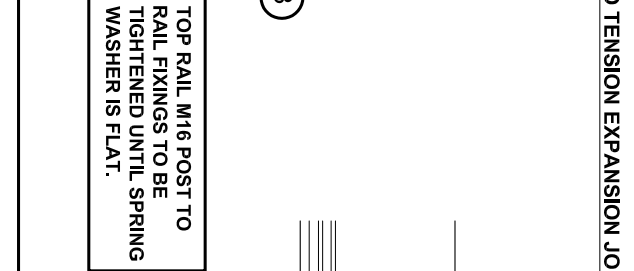
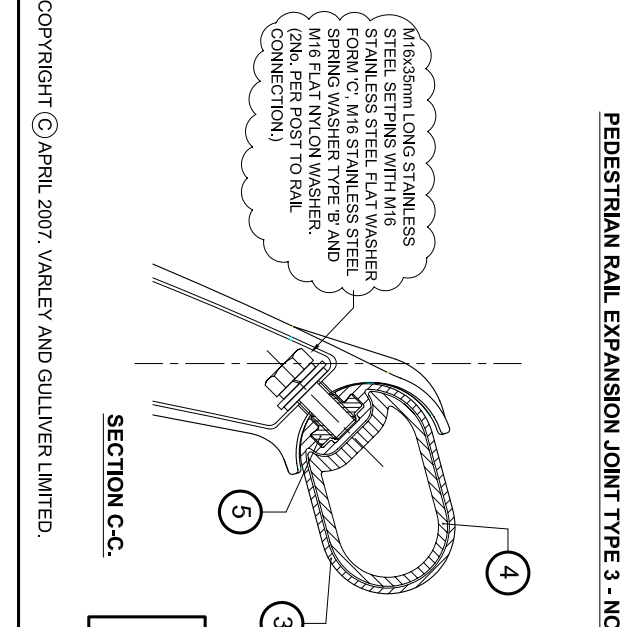
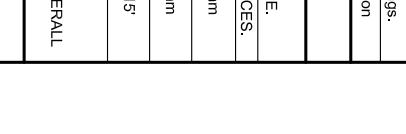
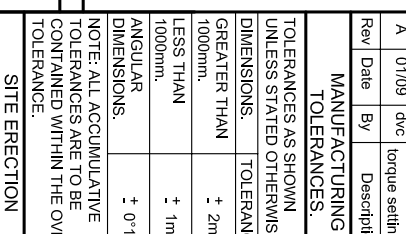
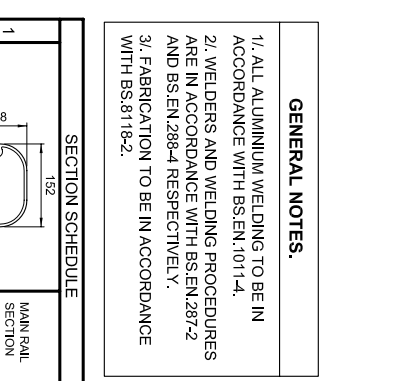
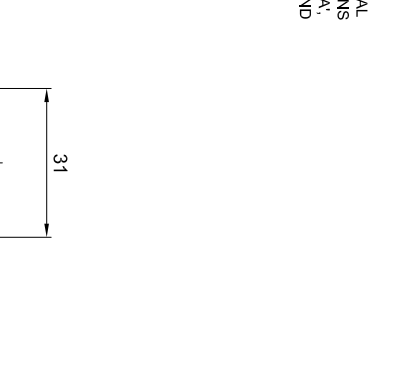
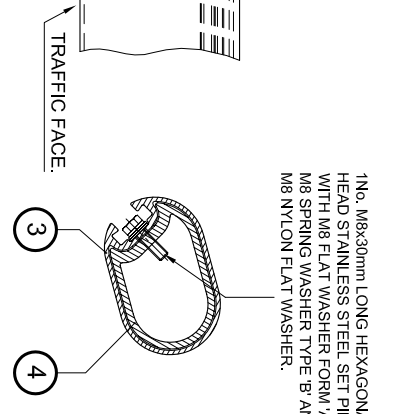
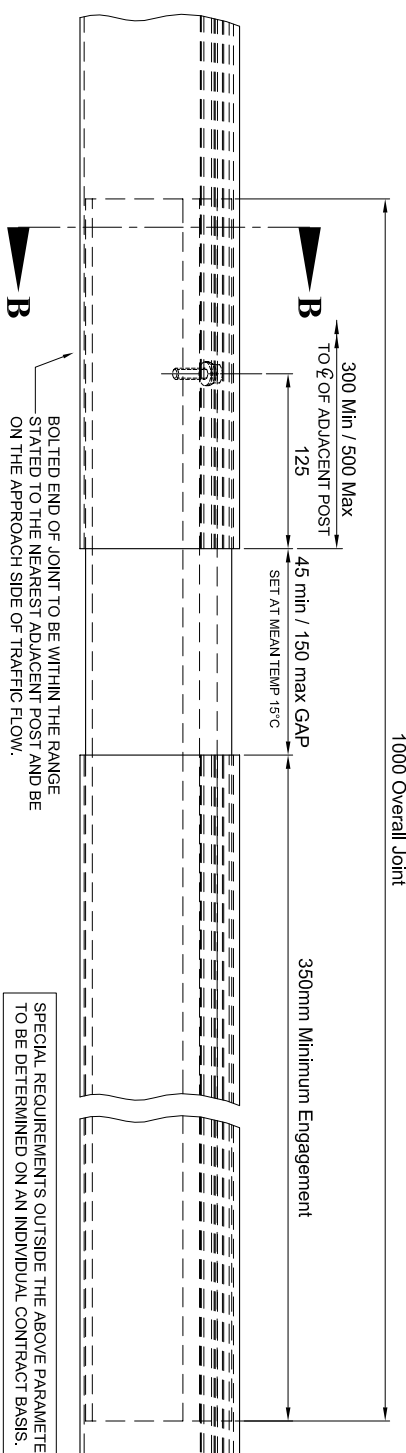
750 Overall Joint



| MATERIAL SPECIFICATION. | | |
|--------------------------------|---|---|
| ITEM | SPECIFICATION | SPECIFICATION |
| SPRING PIN (ref: C1DPR8x20MDK) | ALUMINIUM PLATES / SHEETS ARE TO BE ALUMINIUM ALLOY EN AW5083 O IN ACCORDANCE WITH BS.EN.485-1, BS.EN.485-2, BS.EN.485-3 AND BS.EN.485-4. | ALL BOLTS / SETPINS TO CONFORM TO BS.3692 AND BE STAINLESS STEEL TO BS.ENISO.3506-1 GRADE A4-80. |
| RAIL CAPS. | NUTS. | ALL NUTS TO CONFORM TO BS.3692 AND BE STAINLESS STEEL TO BS.ENISO.3506-2 GRADE A4. |
| STANDARD COILED SPRING PINS. | STANDARD COILED SPRING PINS IN STAINLESS STEEL TO BS.ENISO.8750. | WASHERS TO BE M20 FORM 'B' AND M16 FORM 'C' CONFORMING TO BS.4320 AND BE STAINLESS STEEL TO BS.ENISO.3506 GRADE A4 OR A2. |
| PLAIN WASHERS. | | |



CRANKED MAIN RAIL.



GENERAL NOTES.

- 1/ ALL ALUMINIUM WELDING TO BE IN ACCORDANCE WITH BS.EN.1011-4.
- 2/ WELDERS AND WELDING PROCEDURES ARE IN ACCORDANCE WITH BS.EN.287-2 AND BS.EN.288-4 RESPECTIVELY.
- 3/ FABRICATION TO BE IN ACCORDANCE WITH BS.8118-2.

MANUFACTURING TOLERANCES.

| TOLERANCES AS SHOWN UNLESS STATED OTHERWISE. | TOLERANCES. |
|--|-------------|
| GREATER THAN 1000mm. | + 2mm |
| LESS THAN 1000mm. | + 1mm |
| ANGULAR DIMENSIONS. | + 0°15' |

NOTE: ALL ACCUMULATIVE TOLERANCES ARE TO BE CONTAINED WITHIN THE OVERALL TOLERANCE.

SITE ERECTION TOLERANCES: WILL VARY TO SUIT SITE CONDITIONS.

ALL STANDARDS QUOTED ARE DEEMED CURRENT AT THE DATE THE DRAWING IS ISSUED FOR APPROVAL, UNLESS OTHERWISE STATED.

THIS DRAWING TO BE USED ONLY WITH W/O.No.

DRAWINGS TO BE RETURNED TO DRAWING OFFICE ON COMPLETION OF WORK.

| Rev | Date | By | Description |
|-----|-------|-----|---------------------------------------|
| B | 08/10 | CJB | M16 plain washer changed to form 'C'. |
| A | 01/09 | dvc | Minor revisions to torque settings. |

| SECTION SCHEDULE | |
|------------------|--------------------------------------|
| 1 | MAIN RAIL SECTION 110931 |
| 2 | RAIL JOINT SECTION 110932 |
| 3 | PEDESTRIAN RAIL SECTION 110934 |
| 4 | PEDESTRIAN RAIL JOINT SECTION 110935 |
| 5 | RAIL CONNECTION NUT SECTION 110935 |

| SCALE | DATE | DRN | P.G.H. | CHK | D.V.C. |
|-------|-------------|-----|--------|-----|--------|
| | 02/04/2007. | | | | |

TITLE: STANDARD ARRANGEMENT DRAWINGS OF VGAN 300 SERIES ALUMINIUM PARAPET SYSTEM. VGAN 301.

DRAWING NUMBER: VGAN 300 - 03.B.

V&G
 Varley and Gulliver Ltd.
 Alfred Street, Spinkhoe,
 Birmingham B12 8JK
 Tel. 44 (0) 121 773 2441
 Fax. 44 (0) 121 766 6875
 Website: www.v-and-g.co.uk

ALL DIMENSIONS IN MM.
 VGAN 300 PARAPET SYSTEM ARE COVERED BY DESIGN RIGHTS AND PATENT PENDING.
 COPYRIGHT © APRIL 2007. VARLEY AND GULLIVER LIMITED.