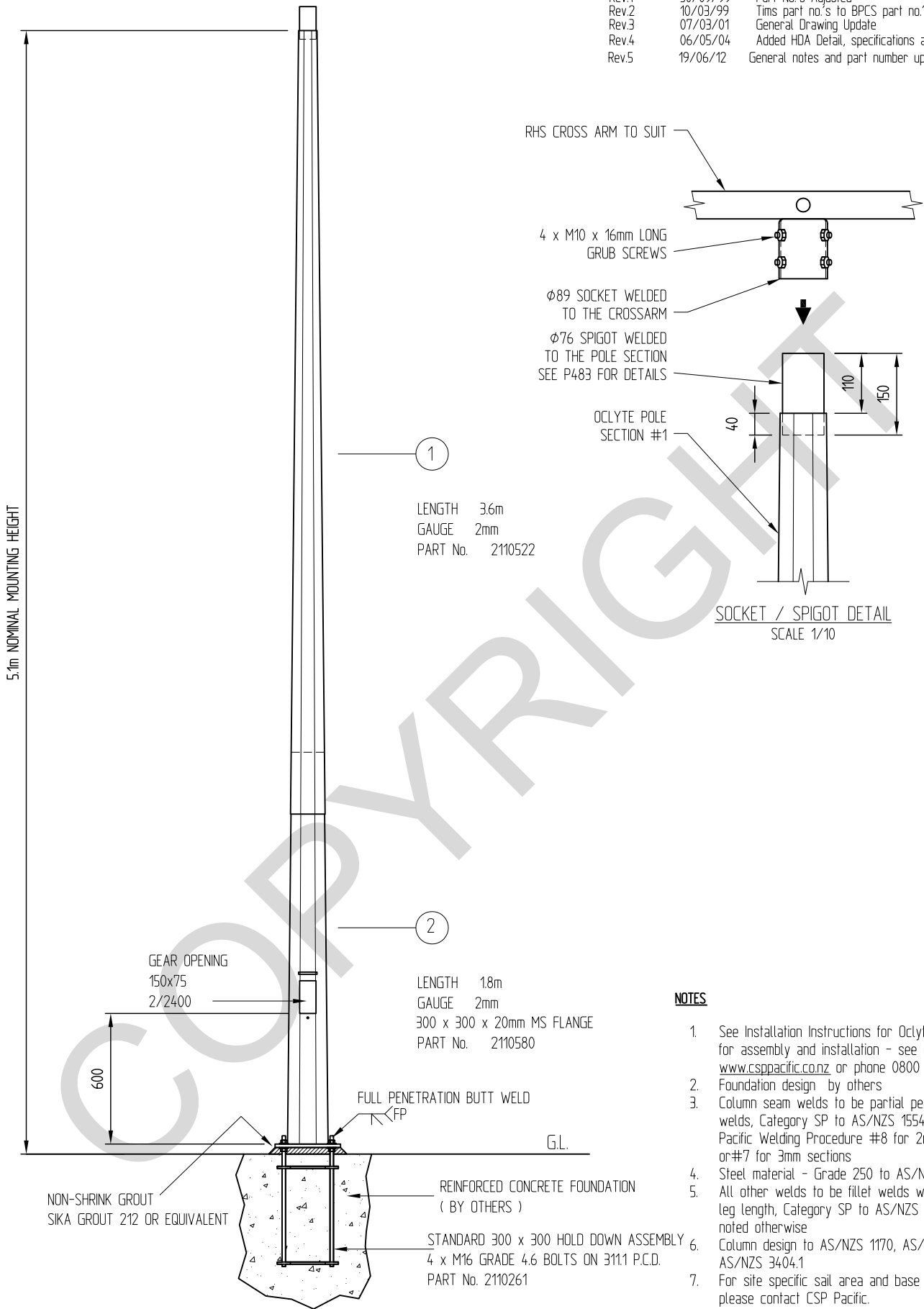


Revision	Rev. Date	Changes Made
Rev.1	30/09/99	Part No.'s Adjusted
Rev.2	10/03/99	Tims part no.'s to BPCS part no.'s
Rev.3	07/03/01	General Drawing Update
Rev.4	06/05/04	Added HDA Detail, specifications and notes
Rev.5	19/06/12	General notes and part number updated



NOTES

1. See Installation Instructions for Oclyte™ Columns for assembly and installation - see our web site www.cspacific.co.nz or phone 0800 655 200
2. Foundation design by others
3. Column seam welds to be partial penetration butt welds, Category SP to AS/NZS 1554.1. Use CSP Pacific Welding Procedure #8 for 2mm and #8 or #7 for 3mm sections
4. Steel material - Grade 250 to AS/NZS 3678
5. All other welds to be fillet welds with a min 5mm leg length, Category SP to AS/NZS 1554.1, unless noted otherwise
6. Column design to AS/NZS 1170, AS/NZS 4676 and AS/NZS 3404.1
7. For site specific sail area and base reactions please contact CSP Pacific.
8. Assembly galvanized weight = 510 Kg not including crossarm and H.D.A.



306 Neilson Street,
Onehunga, Auckland
PO Box 12 949, Penrose
Auckland, New Zealand
Telephone 09-634 1239
Facsimile 09-634 4525
www.cspacific.co.nz

OCLYTE 5.1m NOMINAL MOUNTING HEIGHT FLANGE BASE FLOODLIGHT COLUMN

ASSEMBLY PART No. 2110197
(CROSS ARM / HDA NOT INCLUDED)

Drawn by	ZS	Date	11/05/99
Checked		Scale	A4 1/25
Reference No.			
Drawing no.	P1478	Rev. No.	5