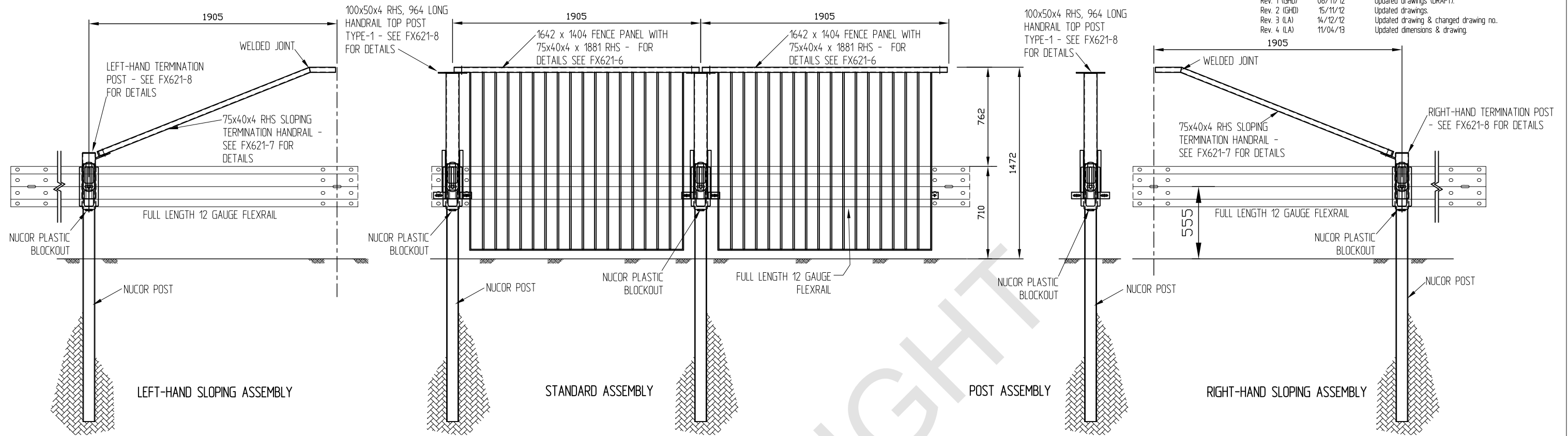
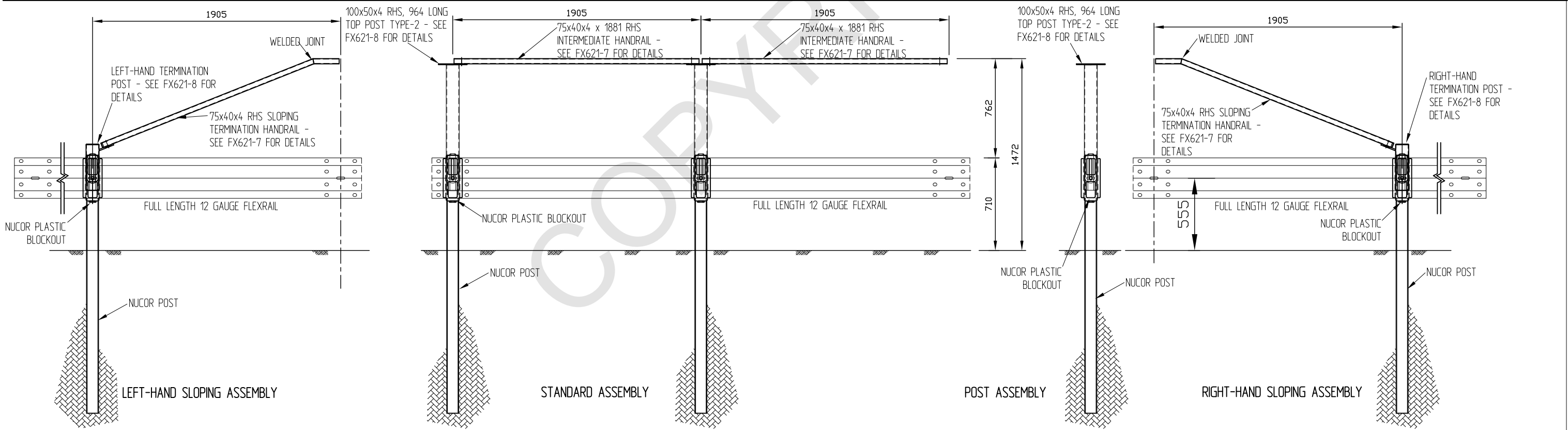


Revision	Rev. Date	Changes Made
Rev. 1 (GHD)	08/11/12	Updated drawings (DRAFT).
Rev. 2 (GHD)	15/11/12	Updated drawings.
Rev. 3 (LA)	14/12/12	Updated drawing & changed drawing no.
Rev. 4 (LA)	11/04/13	Updated dimensions & drawing.



TYPICAL ELEVATION OF PVB BARRIER WITH FENCE PANEL



TYPICAL ELEVATION OF NU-GUARD PVB BARRIER WITHOUT FENCE PANEL

NB. RIGHT SIDE AND LEFT HAND SIDE OF THE PVB BARRIER IS IDENTIFIED WHEN FACING THE BARRIER FROM THE FLEXRAIL SIDE.

ALSO SEE FX621-2, FX621-3, FX621-4, FX621-5, FX621-6, FX621-7 & FX621-8 FOR OTHER DETAILS

CSP PACIFIC
 306 Neilson Street,
 Onehunga, Auckland
 PO Box 12 949, Penrose
 Auckland, New Zealand
 Telephone 09-634 1239
 Facsimile 09-634 4525
 www.csppacific.co.nz

Copyright: This design, information and drawing remain the property of CSP Pacific and may not be used or copied without approval in writing from CSP Pacific.

NU-GUARD PVB GUARDRAIL SYSTEM
 SHOWING WITH & WITHOUT FENCE
 PANEL ASSEMBLIES

Drawn by	LA	Date	30/07/12
Checked		Scale	A3 1:10
Reference No.			
Drawing no.	FX621-1	Rev. No.	4