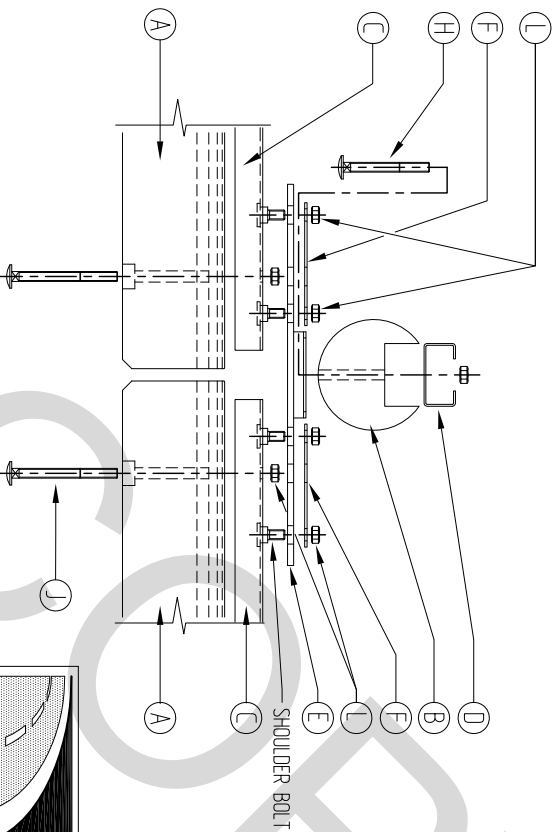
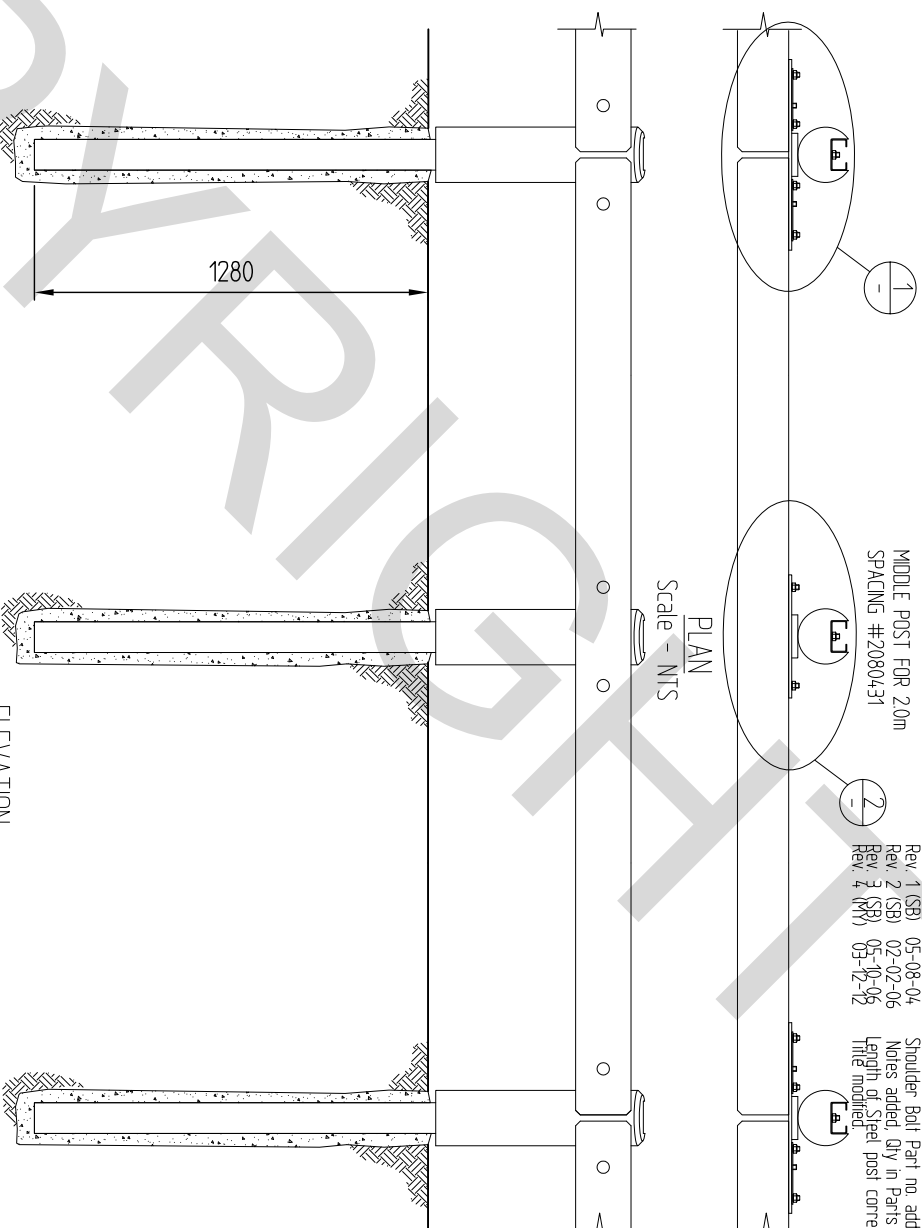


(NOTE: 4.0m SPACING PART #2080430 USES 2x M16x160 COACH BOLT & NUT, NO MIDDLE POST, SPLICE BARS, ETC.)

DETAIL
2.0m SPACING ONLY
Scale 1 : 125



DETAIL
Scale 1 : 125



PLAN
Scale - NTS

ELEVATION
Scale - NTS

PARTS LIST

NO.	DESCRIPTION	PART NO.	QTY (2.0m)	QTY (4.0m)	DWG NO.
A	Ulning Rail Facing - 180φ	2080400	1*	1**	FX422
B	Ulning Post Facing - 180φ	2080401	2	1	FX424
C	U-Channel c/w M16x50 Shoulder Bolt	2080402	1*	1**	FX420/FX425
D	Steel Support Post	2080403	2	1	FX423
E	Splice Bar c/w FuseBox	2080404	1	1	FX421
F	TL20 - Plate Washer	2080407	2	2	FX427

* Preassembled Part - 2.0m Spacing - Part #2080418

** Preassembled Part - 4.0m Spacing - Part #2080417

G	Intermediate Splice Bar	2080405	1	-	FX434
H	M16 x 140 Coach Bolt	2080410	2	2	-
J	M16 x 160 Coach Bolt	2080411	2*	4**	-
K	M16 x 180 Coach Bolt	2080412	2*	-	-
L	M16 Nut	2080414	4*	4**	-

Revision	Rev. Date	Changes Made
Rev. 1 (SB)	05-08-04	Shoulder Bolt Part no. added
Rev. 2 (SB)	02-02-06	Notes added, Qty in Parts list added, Title modified
Rev. 3 (SB)	05-10-06	Length of Steel post corrected & dimension added
Rev. 4 (SB)	05-12-12	Title modified

306 Neilson Street,
Onehunga, Auckland
PO Box 12 949, Penrose
Auckland, New Zealand
Telephone 09-634 1239
Facsimile 09-634 4525
www.cspacific.co.nz

CSP
PACIFIC

Copyright. The design information and drawing remain the property of CSP Pacific and may not be used or copied without approval in writing from CSP Pacific.

LOGRAIL BARRIER SYSTEM
(EUROPEAN STANDARD)
ASSEMBLY DRAWING - 4m & 2m SPACING

2m SPACING PART # - 2080431 - c/w MIDDLE POST
4m SPACING PART # - 2080430 - NO MIDDLE POST

Drawn by	ELI	Date	14/01/02
Checked		Scale A4	AS SHOWN
Reference No.			
Drawing no.	FX419	Rev. No.	4