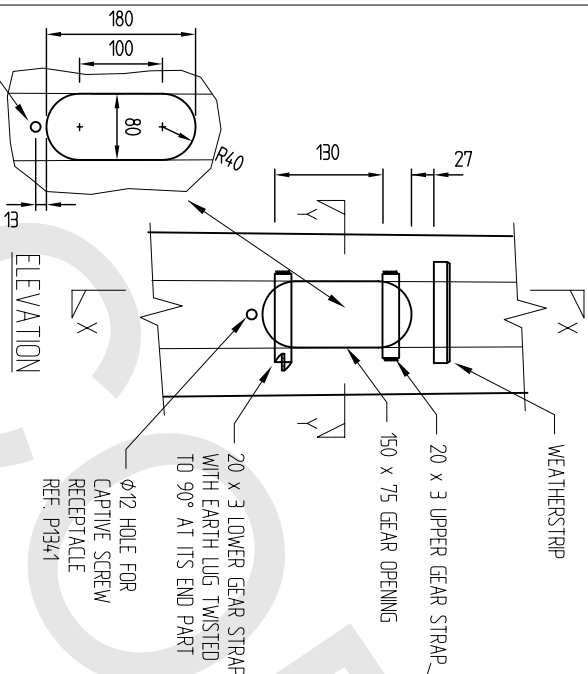
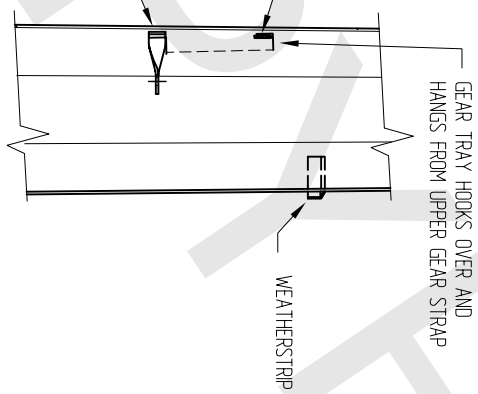


GEAR TRAY NUMBER	PART NUMBER	L' (mm)	W' (mm)
#1	2110233	130	70
#2A	2110234	130	90
#2B	2110235	260	100

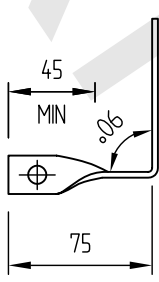
GEAR STRAP	PART NUMBER	X' (mm)
#1 LOWER	2111124	80
#1 UPPER	2111125	80
#2A LOWER	2111122	100
#2A UPPER	2111123	100
#2B LOWER	2111126	110
#2B UPPER	2111127	110



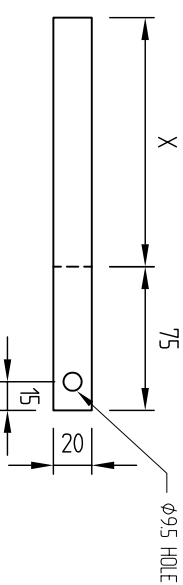
SECTION X-X



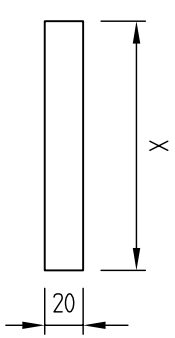
PLAN - LOWER GEAR STRAP



ELEVATION - LOWER GEAR STRAP (EXPANDED)



ELEVATION - UPPER GEAR STRAP



NOTES:

SEE ALSO P121, P852

CSP PACIFIC
 306 Neilson Street,
 Onehunga, Auckland
 PO Box 12 949, Penrose
 Auckland, New Zealand
 Telephone 09-634 1239
 Facsimile 09-634 4525
 www.cspacific.co.nz

Copyright. The design information and drawings remain the property of CSP Pacific and may not be used or copied without approval in writing from CSP Pacific.

STANDARD GEAR STRAP
 WITH EARTH LUG, GEAR OPENING
 AND GEAR TRAY DETAILS
 - FOR 2MM POLE SECTION #1 & #2
 PUNCHED OPENING

Drawn by	SB	Date	03-06-04
Checked		Scale	A4
Reference No.			NTS
Drawing no.	P2099	Rev. No.	1