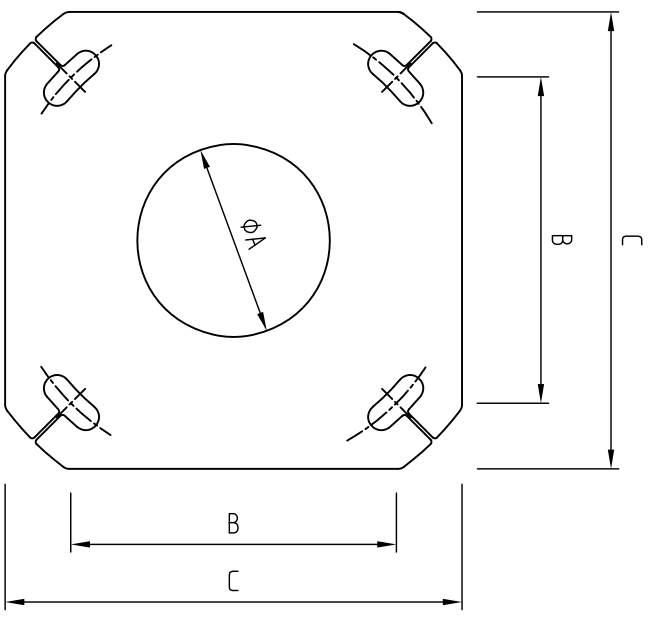
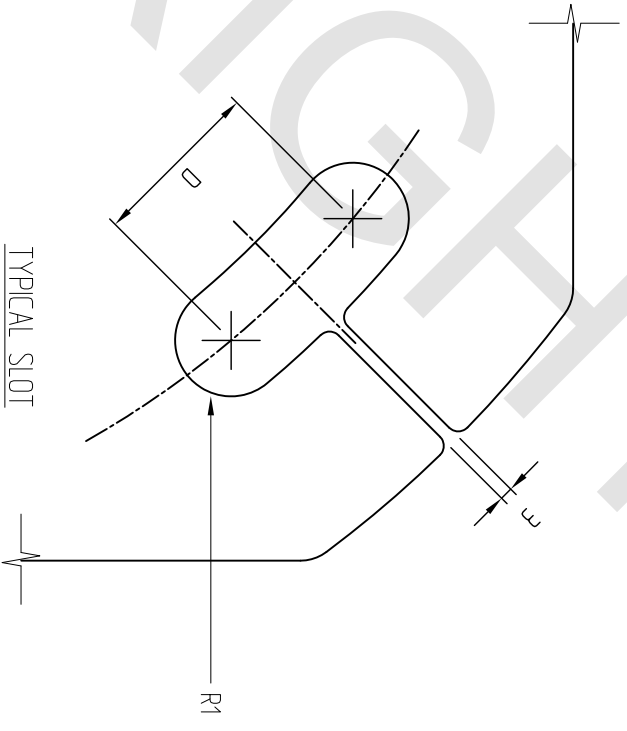


Revision	Rev. Date	Changes Made
Rev. 1 SB	30/04/2004	Adding PCD's in Column B
Rev. 2 SB	02/08/2005	Slot Sizes reduced New PC drawing
Rev. 3 SB	30/01/2007	PCD of 450 base plate corrected
Rev. 4 SB	08/08/2008	Slot sizes increased, new PC drawings, item # added



TYPICAL PLAN



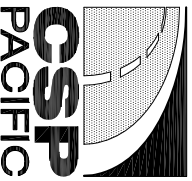
TYPICAL SLOT

PART No.	phi A	B (PCD)	C	D	SLOT SIZE	R1	PLATE THICKNESS	PC DWG	BASEPLATE TO FIT	GALV WT (Kg)
2110191P	120	220 (311.1 PCD)	300	25	20 x 45	10	16	PC5_R3 ITEM 1	4-M16 BOLTS	10
2110191P ITEM#2	80	220 (311.1 PCD)	300	25	20 x 45	10	16	PC5_R3 ITEM 2	4-M16 BOLTS	10
2110192	190	260 (367.7 PCD)	375	40	24 x 64	12	20	PC6_R2	4-M20 BOLTS	17.8
2110193	190	320 (452.5 PCD)	450	40	28 x 68	14	20	PC7_R3 ITEM 1	4-M24 BOLTS	27.7
NON STANDARD	140	320 (452.5 PCD)	450	40	28 x 68	14	20	PC7_R3 ITEM 2	4-M24 BOLTS	27.7

NOTE: TOLERANCE IS +0mm, -1mm OVER THE ACTUAL SLOT SIZE

SEE ALSO P880-1, P881, P882, P964, P967, P970

Copyright. This design information and drawing remain the property of CSP Pacific and may not be used or copied without express written permission from CSP Pacific.



**306 Neilson Street,  
Onehunga, Auckland  
PO Box 12 949, Pentose  
Auckland, New Zealand  
Telephone 09-634 1239  
Facsimile 09-634 4525  
www.cspacific.co.nz**

STANDARD BASEPLATE  
PARAMETRIC DRAWING

300 SQ. - 450 SQ. BASEPLATES

Drawn by <b>NIMARKHAM</b>	Date <b>20-07-00</b>
Checked	Scale A4
Reference No.	NTS
Drawing no. <b>P1672</b>	Rev. No. <b>4</b>