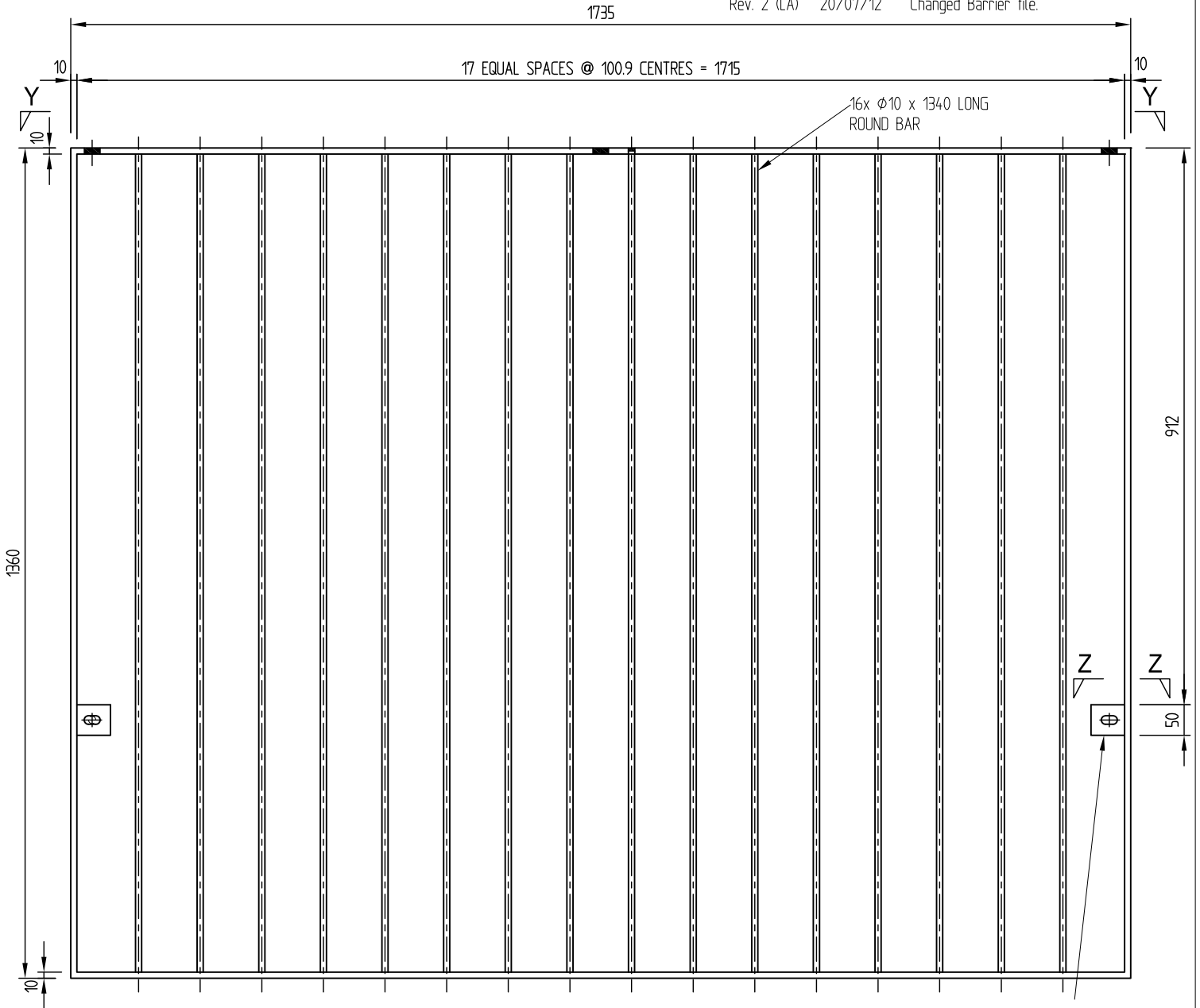
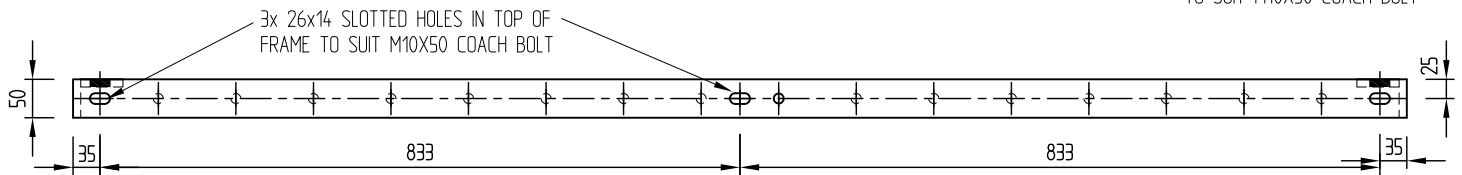


Revision	Rev. Date	Changes Made
Rev. 1 (LA)	11-05-12	Modified Panel Fence to suit.
Rev. 2 (LA)	20/07/12	Changed Barrier tile.



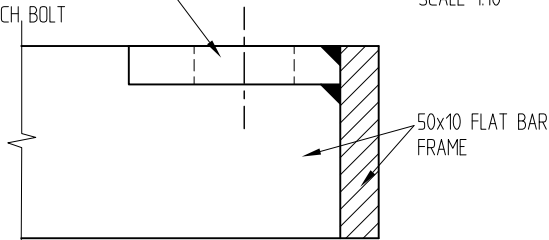
**ELEVATION OF FENCE PANEL**  
SCALE 1:10

2x 50x10 x 55 LONG LUGS WITH A 26x14 SLOTTED HOLE TO SUIT M10X50 COACH BOLT



**VIEW 'Y-Y'**  
SCALE 1:10

50x10 x 55 LONG LUGS WITH A 26x14 SLOTTED HOLE TO SUIT M10X50 COACH BOLT



**SECTION 'Z-Z' - TYPICAL DETAIL**  
SCALE 1:2

**NOTES:**

1. ALL MATERIAL GRADE 250 MINIMUM.
2. HOT DIP GALVANIZE TO AS/NZS 4680

ALSO SEE FX621-1, FX621-2, FX621-3, FX621-4 & FX621-6 FOR OTHER DETAILS



306 Neilson Street,  
Onehunga, Auckland  
PO Box 12 949, Penrose  
Auckland, New Zealand  
Telephone 09-634 1239  
Facsimile 09-634 4525  
www.csppacific.co.nz

**NU-GUARD PVB GUARDRAIL SYSTEM**

**FENCE PANEL DETAILS**

Drawn by	SB	Date	17/02/12
Checked		Scale	A4 1:10
Reference No.			
Drawing no.	FX621-5	Rev. No.	2

Copyright: This design, information and drawing remain the property of CSP Pacific and may not be used or copied without approval in writing from CSP Pacific.