

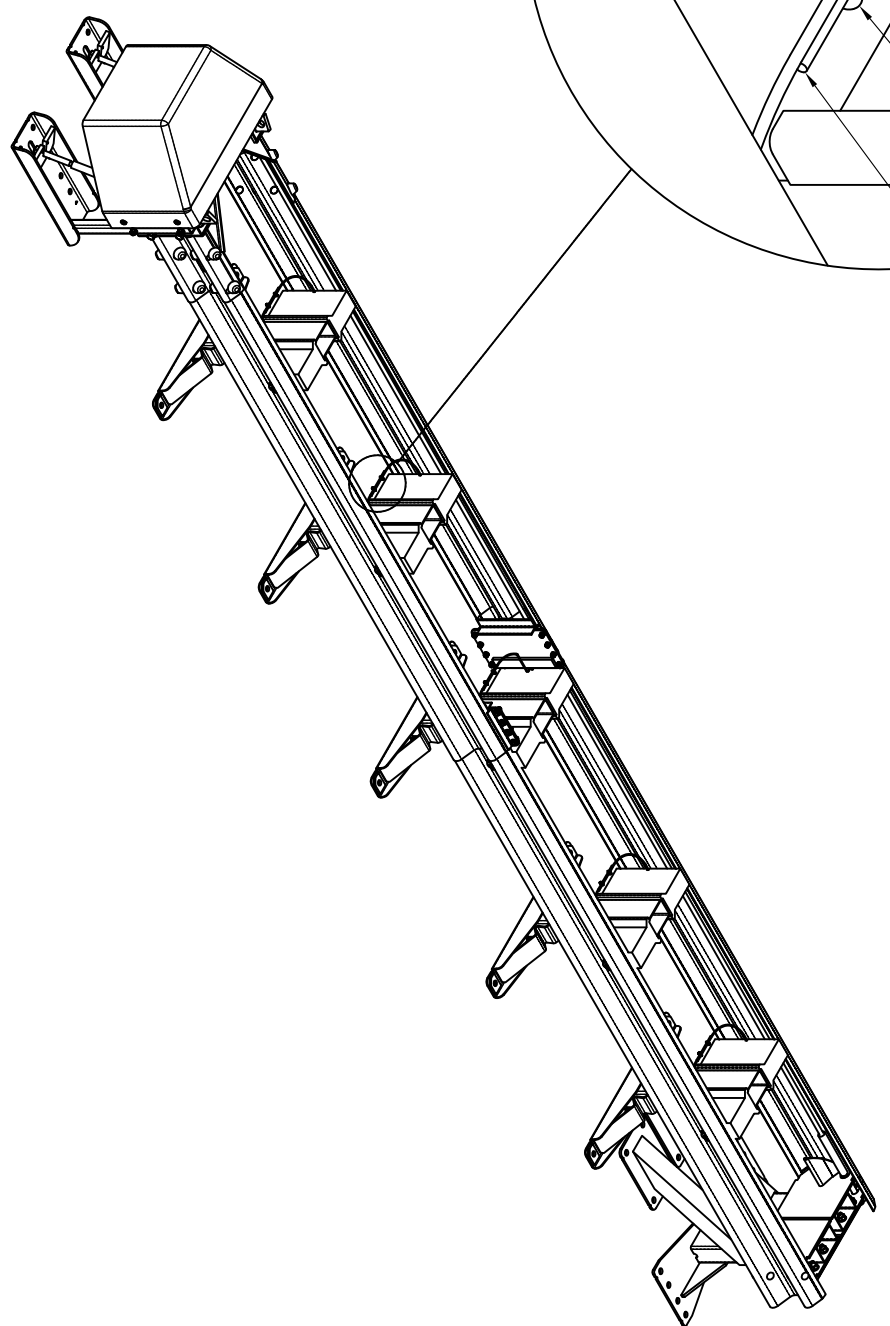
\*NOTE: ORIENTATION OF CLAMP IS TO HAVE U-BOLT ON THE SIDE OF THE CUT END OF WIRE ROPE

OVERLAP WIRE ROPE A MINIMUM OF 95mm

5mm GALVANIZED WIRE ROPE CLAMP

BLOCKOUT TETHER

DETAIL E  
SCALE 1 : 2




306 Neilson Street,  
Onehunga, Auckland  
PO Box 12 949, Pentose  
Auckland, New Zealand  
Telephone 09-634 1239  
Facsimile 09-634 4525  
www.cspacific.co.nz

Copyright. This design information and drawing remain the property of CSP Pacific and may not be used or copied without approval in writing from CSP Pacific.

X-TENUATOR  
100kph NARROW

AF/BSI Reference Dwg No. XTEN100N  
SHEET 4 OF 4

Drawn by	SB	Date	19/05/11
Checked	--	Scale	A4
Reference No.	NTS		
Drawing no.	FX584-4		
Rev. No.	1		