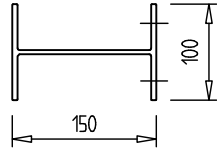
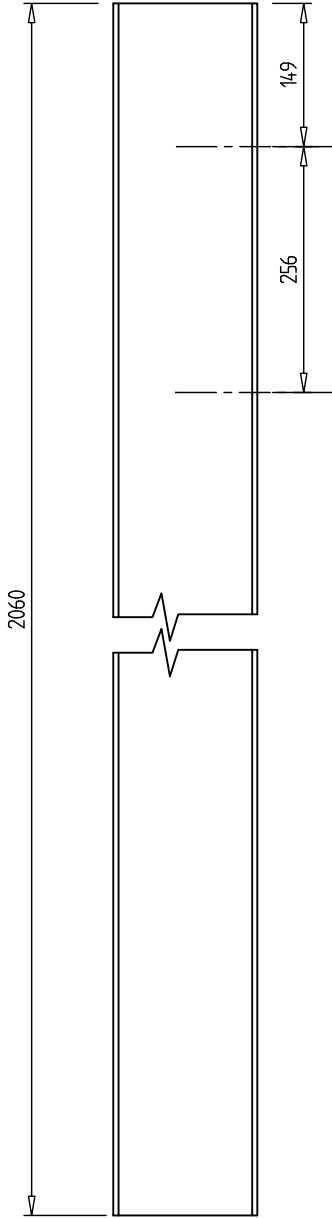


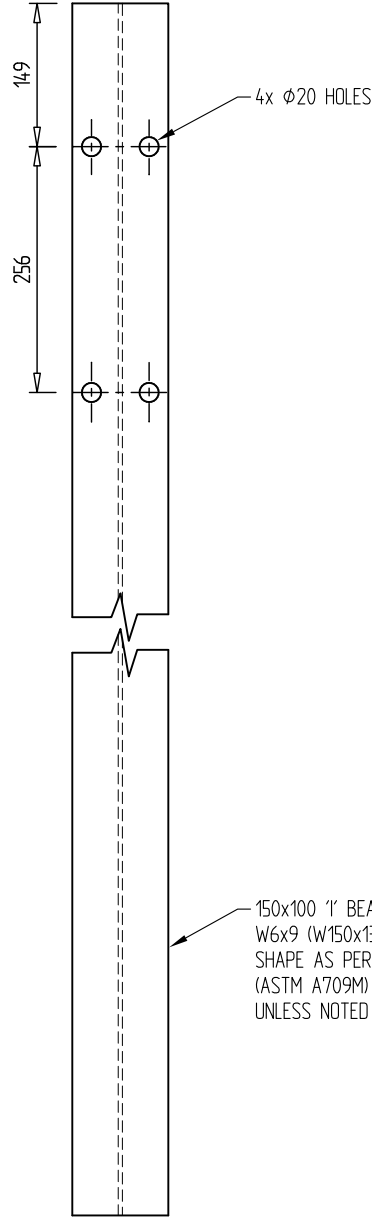
Revision	Rev. Date	Changes Made
Rev. 1	19/07/05	Length of Driven Post changed from 2100 to 2060 1" Post Cross Section dimensions modified to 150x102
Rev. 2	16/10/06	Driven post weight corrected
Rev. 3 (SB)	07/03/12	1" beam specs added for post, blockout removed



PLAN



ELEVATION



SIDE VIEW

DRIVEN POST

Part No. 2080388  
 BLACK WT. = 24.8 Kg  
 GALV WT. = 26.0 Kg

150x100 1" BEAM  
 W6x9 (W150x13.5) STRUCTURAL  
 SHAPE AS PER AASHTO M270M  
 (ASTM A709M) GRADE 250 STEEL  
 UNLESS NOTED OTHERWISE

- NOTES :
- 1) AS PER FHWA REPORT HMHS-B64, THE DRIVEN "1" POST HAS BEEN TESTED TO NCHRP350 TL4.
  - 2) FOR MODIFIED BLOCKOUT REFER TO DWG FX475

ALSO SEE FX475, FX476



306 Neilson Street,  
 Onehunga, Auckland  
 PO Box 12 949, Penrose  
 Auckland, New Zealand  
 Telephone 09-634 1239  
 Facsimile 09-634 4525  
 www.csppacific.co.nz

THRIEBEAM  
 DRIVEN POST  
 "1" SECTION

Drawn by	SB	Date	22-01-04
Checked		Scale A4	1 : 8
Reference No.			
Drawing no.	FX459	Rev. No.	3