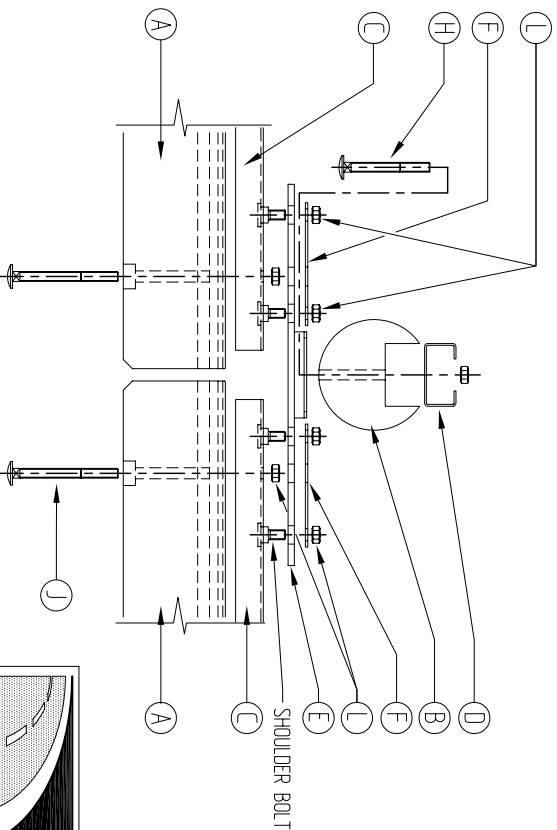
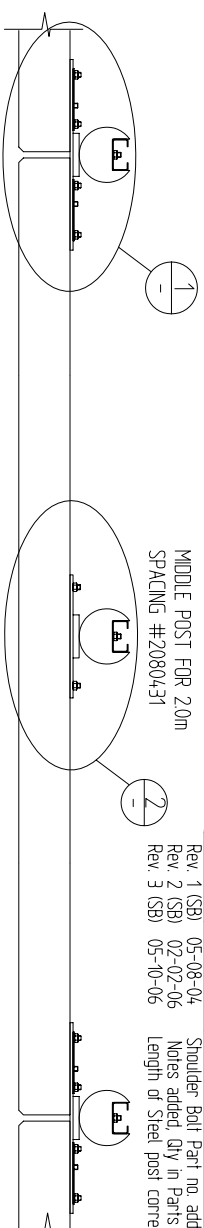


(NOTE: 4.0m SPACING PART #2080430 USES 2x M16x160 COACH BOLT & NUT, NO MIDDLE POST, SPLICE BARS, ETC)

DETAIL
2.0m SPACING ONLY
Scale 1 : 125

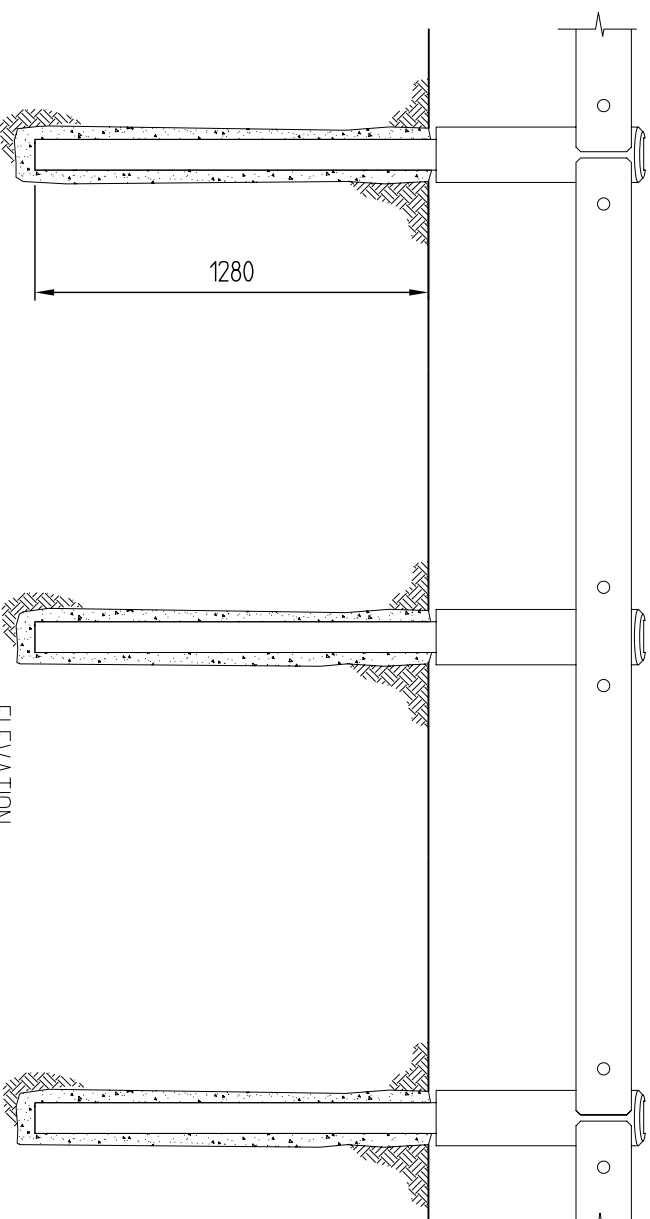


DETAIL
Scale 1 : 125



MIDDLE POST FOR 2.0m SPACING #2080431

PLAN
Scale - NTS



ELEVATION
Scale - NTS

PARTS LIST

NO.	DESCRIPTION	PART NO.	QTY (2.0m)	QTY (4.0m)	DWG NO.
A	Unilog Rail Facing - 180φ	2080400	1*	1**	FX422
B	Unilog Post Facing - 180φ	2080401	2	1	FX424
C	U-Channel c/w M16x50 Shoulder Bolt	2080402	1*	1**	FX420/FX425
D	Steel Support Post	2080403	2	1	FX423
E	Splice Bar c/w FlangeBox	2080404	1	1	FX421
F	TL20 - Plate Washer	2080407	2	2	FX427

* Preassembled Part - 2.0m Spacing - Part #2080418

** Preassembled Part - 4.0m Spacing - Part #2080417

NO.	DESCRIPTION	PART NO.	QTY (2.0m)	QTY (4.0m)	DWG NO.
G	Intermediate Splice Bar	2080405	1	-	FX434
H	M16 x 140 Coach Bolt	2080410	2	2	-
J	M16 x 160 Coach Bolt	2080411	2*	4**	-
K	M16 x 180 Coach Bolt	2080412	2*	-	-
L	M16 Nut	2080414	4*	4**	-

Revision	Rev. Date	Changes Made
Rev. 1 (SB)	05-08-04	Shoulder Bolt Part no. added
Rev. 2 (SB)	02-02-06	Notes added, Qty in Parts list added, Title modified
Rev. 3 (SB)	05-10-06	Length of Steel post corrected & dimension added

306 Neilson Street,
Onehunga, Auckland
PO Box 12 949, Penrose
Auckland, New Zealand
Telephone 09-634 1239
Facsimile 09-634 4525
www.cspacific.co.nz

LOGRAIL BARRIER SYSTEM
(EUROPEAN STANDARD)
ASSEMBLY DRAWING - 4m & 2m SPACING
2m SPACING PART # - 2080431 - c/w MIDDLE POST TL3
4m SPACING PART # - 2080430 - NO MIDDLE POST TL2

Drawn by	EII	Date	14/01/02
Checked		Scale A4	AS SHOWN
Reference No.			
Drawing no.	FX419	Rev. No.	3

Copyright. This design information and drawing remain the property of CSP Pacific and may not be used or copied without approval in writing from CSP Pacific.