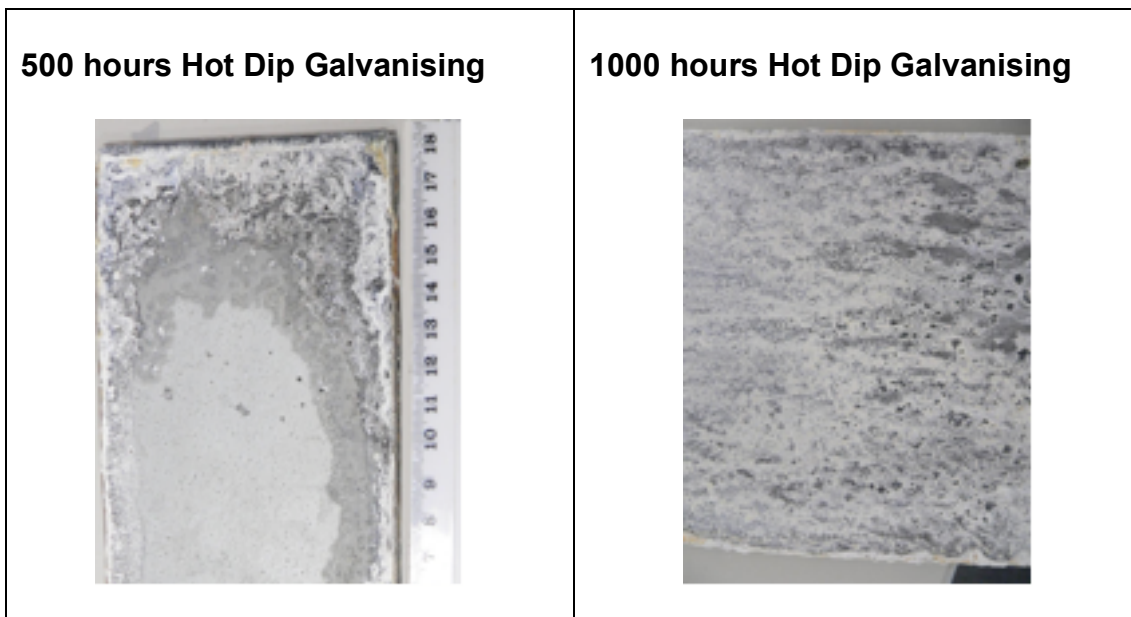


Oclyte Tuff Coat™

Comparative accelerated corrosion test results

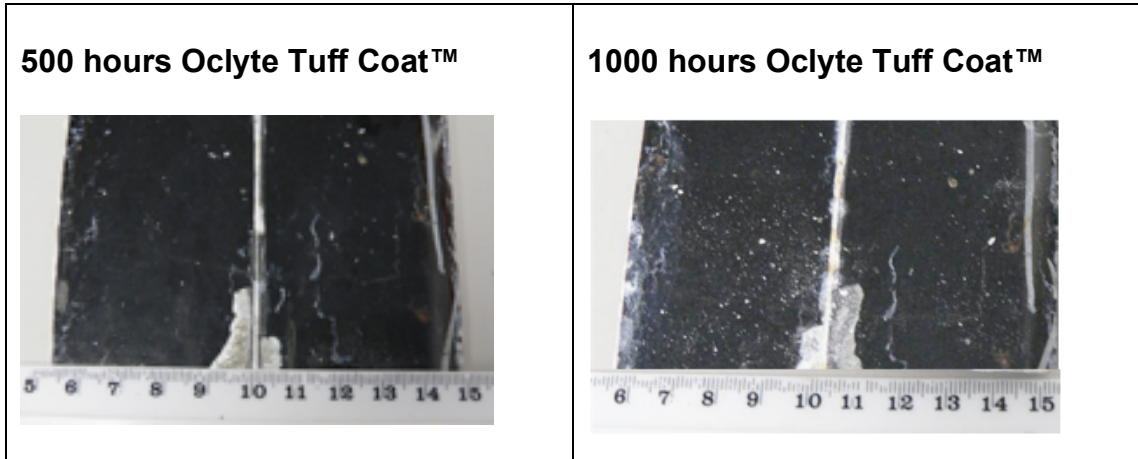
These tests simulated potential damage during installation and handling by scratching the coating on the test pieces down to bare metal. The coating was monitored over time at the scratched area and the undamaged area.

- NB –A saw was required to cut through the **Oclyte Tuff Coat™** to expose the metal during testing



Result

- Galvanising is sacrificing itself to protect the steel
- After 1000 hours of salt spray testing almost all the galvanising was gone



Result

- Excellent adhesion to the surface
- 5-10mm loss of adhesion at the cut surface area only
- 4mm start of corrosion at the cut area
- Uncut surface is in excellent condition, no corrosion present

Due to the unique toughness and proven durability of the **Oclyte Tuff Coat™** polyurethane membrane, CSP Pacific can now provide the ultimate secondary surface protection to protect the Hot Dip Galvanised surface of embedded structures.

For more information on **Oclyte Tuff Coat™** call now on 0800 655 200
or email on cspcustomerservice@csppacific.co.nz