



# X-350 Tangent and Flared Guardrail End Terminal



X-350 Tangent

## Features

- » Approved to NCHRP 350 TL-3
- » Lower cost
- » Fully re-directive
- » Cost effective, life saving device
- » Length of need (LoN) at post one
- » Improved vehicular control
- » Impact force held in tension – less chance of kinked rail
- » Little or no debris scatter
- » Ease of installation and maintenance
- » 3 x Standard highway rails 12 gauge
- » Impact head weighs only 25 kg's
- » Flared of tangent terminal end
- » Designed & manufactured in NZ
- » Patented technology



X-350 Flared

## Specifications: NCHRP 350 TL-3

- » **Speed:** 100kph
- » **Length:** 11.4m (3rails)
- » **Offset:** 0 – 1200mm
- » **Post 1:** Steel
- » **Posts 2 – 6:** Breakaway timber or steel
- » Run out – 22.5m x 6m
- » LoN starts at Post 1
- » Max grade 10:1
- » All steel components hot dipped galvanised

More information on **X-350 Tangent and Flared Guardrail End Terminals** can be found at [www.cspacific.co.nz](http://www.cspacific.co.nz) or call **0800 655 200**

Leading road side and barrier systems supplier

### CSP PACIFIC

306 Neilson St, Onehunga,  
PO Box 12 949, Penrose,  
Auckland 1642, New Zealand  
[www.cspacific.co.nz](http://www.cspacific.co.nz)



Columns



Multiplate



Retaining



Hire



Barriers

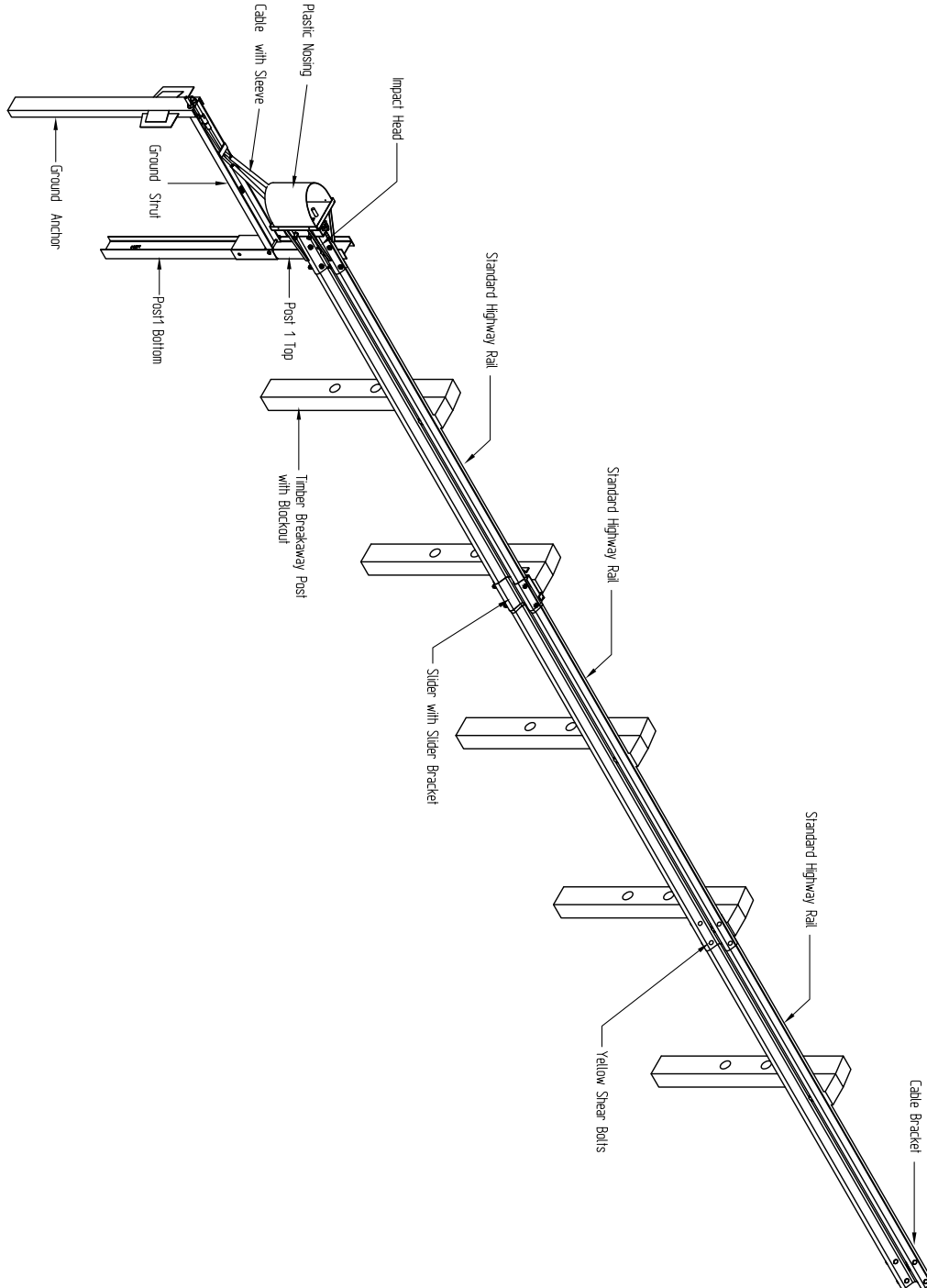


Traffic Control



# X-350 Tangent and Flared Guardrail End Terminal

## X-350 Fully Redirective Non-gating Tangent Terminal End on Timber Posts



More information on **X-350 Tangent and Flared Guardrail End Terminals** can be found at [www.cspacific.co.nz](http://www.cspacific.co.nz) or call **0800 655 200**

Leading road side and barrier systems supplier

### CSP PACIFIC

306 Neilson St, Onehunga,  
PO Box 12 949, Penrose,  
Auckland 1642, New Zealand  
[www.cspacific.co.nz](http://www.cspacific.co.nz)



Columns ■



Multiplate ■



Retaining ■



Hire ■



Barriers ■



Traffic Control ■