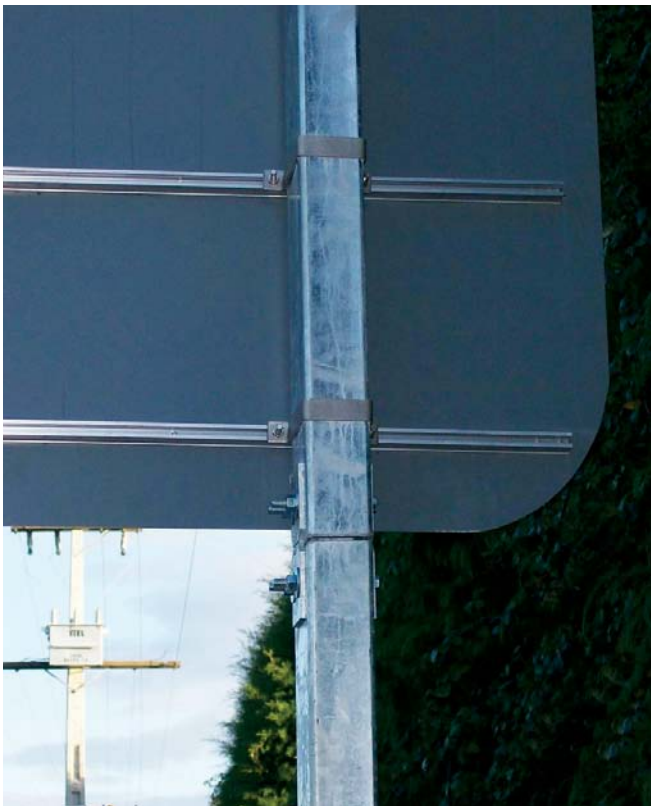




# Breakaway Sign Post System

A fully engineered Breakaway Sign Post System is now available.

CSP Pacific have developed a software package to accurately specify post system requirements, taking into account sign dimensions, wind region and location. This results in a fully engineered, site specific sign.



## Features

- » Accurate, fully engineered design based on specific site and location requirements
- » Avoids over-engineered designs
- » Guaranteed 24-hour turnaround on quote requests accompanied by the appropriate site specifics
- » Utilises Dent Breakaway components from the USA, which are FHWA approved and tested to NCHRP350
- » Manufacturing lead time 2 - 4 weeks
- » Stock items available in some sizes
- » Conforms to NZTA standard published in amendment P/24 Performance Based Specification for Traffic Signs:2008 and RSMA Compliance Standard for Traffic Signs:2008

## Specifications

- » Range of hot dip galvanised steel posts available:
 

I Beam	100mm and 150mm
RHS	150mm x 100mm
	125mm x 75mm
and	100mm x 75mm
SHS	75mm x 75mm
- » Design speeds: 70km/h - 100km/h
- » Site specific foundation designs provided
- » One, two or three post systems available
- » For installation requirements please refer to NZTA Standard P/24 Performance Based Specification for Traffic Signs:2008 and RSMA Compliance Standard for Traffic Signs:2008

**Note:** Posts supporting large signs positioned in high speed clear zone to have a horizontal clearance of 2.1m minimum

More information on **Breakaway Sign Post Systems** can be found at [www.csppacific.co.nz](http://www.csppacific.co.nz) or call **0800 655 200**

Leading road side and barrier systems supplier

### CSP PACIFIC

306 Neilson St, Onehunga,  
PO Box 12 949, Penrose,  
Auckland 1642, New Zealand  
[www.csppacific.co.nz](http://www.csppacific.co.nz)



Columns



Multiplate



Retaining



Hire



Barriers



Traffic Control